

# Important information

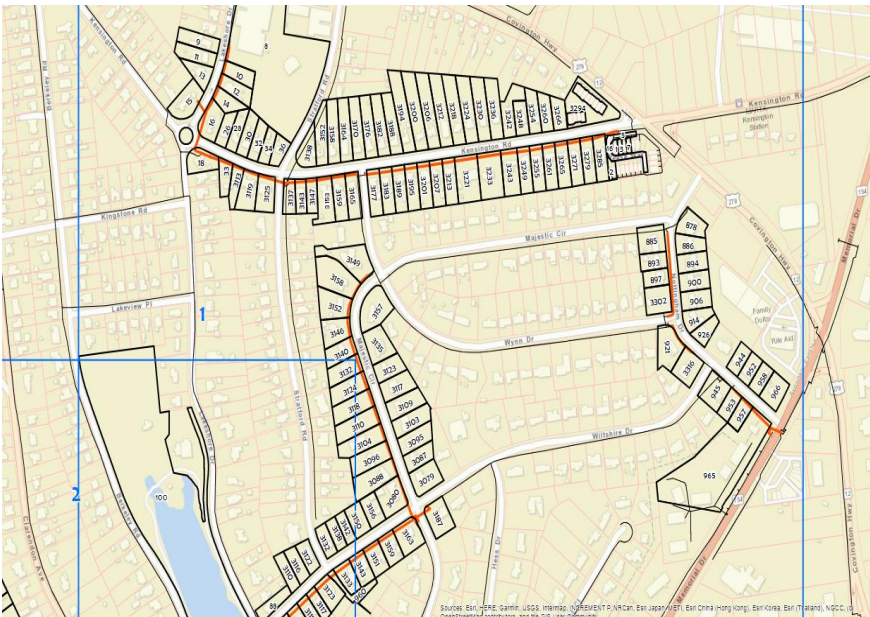
about inspection work in your area

## Dear Customer:

In the coming days you will see Atlanta Gas Light, or one of its trusted contractors, performing routine inspections in your neighborhood. Atlanta Gas Light, along with its contractor AIMS (Pipeline Video Inspection), will be inspecting underground facilities in your neighborhood.

## Inspect Sewers

Sewer inspections are part of Atlanta Gas Light's safety practices. If your sewer service is not accessible from the street, AIMS will make contact with you to coordinate a sewer line inspection from inside your property. There will be no interruption to your natural gas or sewer service during the inspection unless repairs are needed. Vital information from the inspection will be marked on lawns and sidewalks with spraypaint.



Atlanta Gas Light is responsible for maintaining the underground system that safely carries reliable natural gas to homes and businesses in your area. We appreciate your patience and thank you for your understanding as we complete this important work.

## Questions?

**Brett Crankshaw**  
770.686.5183  
bcrankshaw@aimscpanies.com

**April Johnson**  
224.230.6246  
apjohns@southernco.com

For more information about natural gas safety, visit [atlantagaslight.com/safety](http://atlantagaslight.com/safety).

## Affected areas

Ashbury Drive	Memorial Drive
Berkeley Road	Midway Road
Clarendon Avenue	Monticello Place
Columbia Drive	N Carter Road
Conway Road	Nottingham Drive
Dartmouth Avenue	Reese Way
Dorothy Drive	S Columbia Drive
Forrest Boulevard	Thomas Road
Inman Drive	Walker Drive
Kensington Road	Wilburn Lane
Kirk Road	Wiltshire Drive
Lakeshore Drive	Wynn Drive
Majestic Circle	

## For your safety

All AIMS employees will have AIMS issued ID cards. All people working on this project will present ID cards, if requested.

## Restore landscaping & pavement

We understand that you value the appearance of your property. If excavation activity is needed to complete our inspection, Atlanta Gas Light will restore landscaping and paving impacted by our inspections to the condition in which we found it. Temporary restoration of some areas may be necessary until permanent restoration can be completed.

## Our commitment

We take great care in implementing construction practices that limit disturbances and we understand your time is valuable. We appreciate your understanding and thank you for allowing us to continue to provide you with safe and reliable natural gas service.

**atlantagaslight.com**